

# MONTHLY MEMBERSHIP PROGRESS REPORT

LOCATION TEXAS

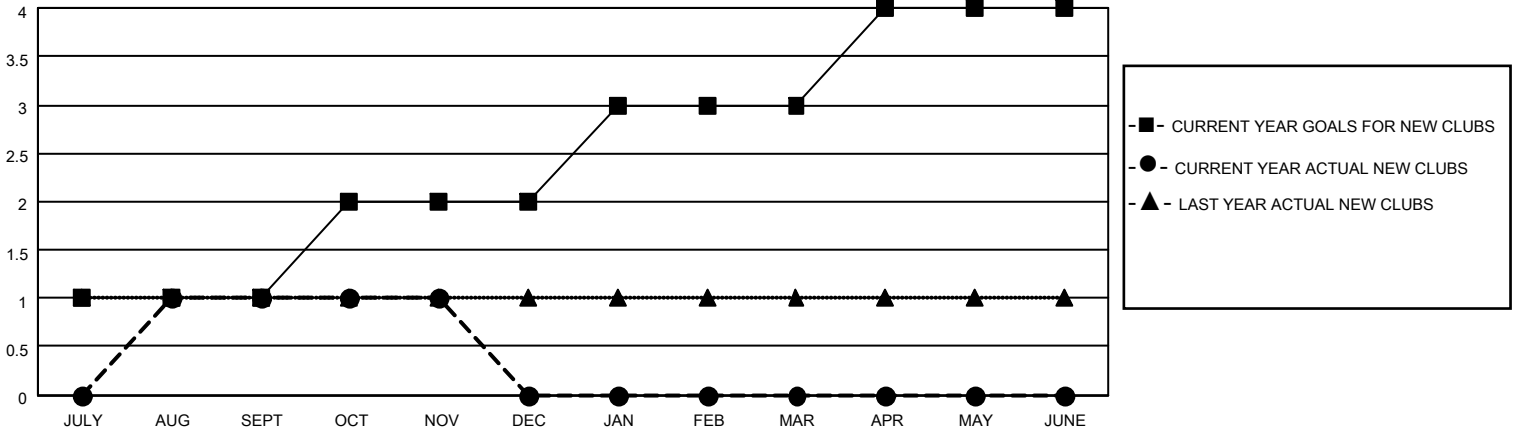
District 2 S2

Results as of: 11/30/2021

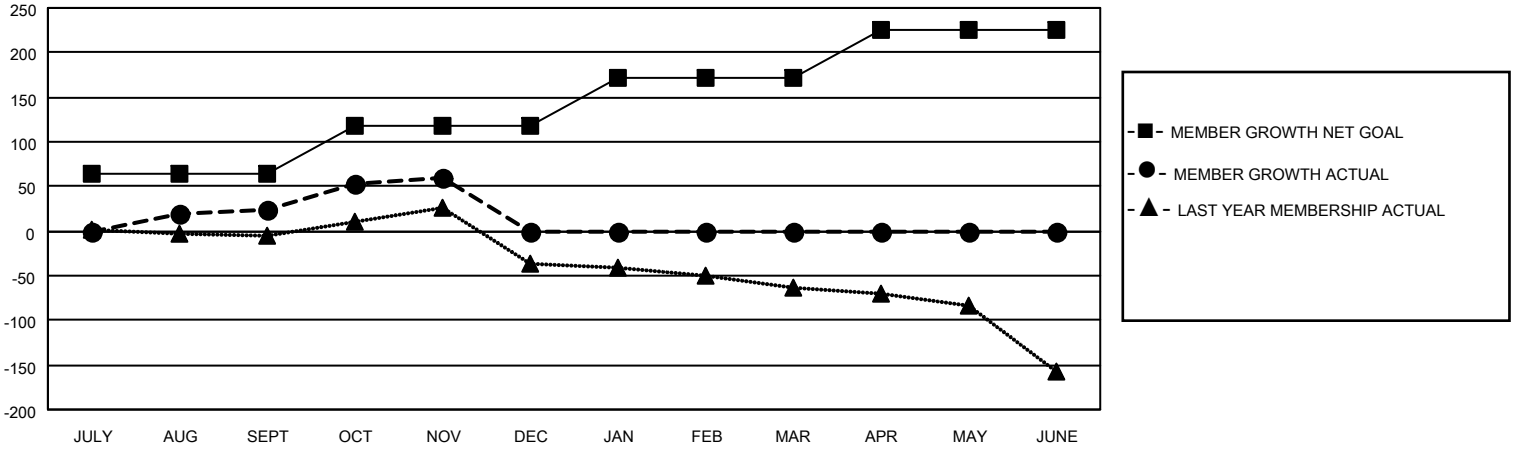
Clubs			
RESULTS FOR 2021-2022			
QUARTER	NEW CLUB GOAL	NEW CLUBS	DROPPED CLUBS
JULY/AUG/SEPT	1	1	1
OCT/NOV/DEC	1	0	0
JAN/FEB/MAR	1	0	0
APR/MAY/JUNE	1	0	0

Members			
RESULTS FOR 2021-2022			
QUARTER	MEMBER GROWTH NET GOAL	MEMBER GROWTH ACTUAL	DROPPED MEMBERS ACTUAL (including transfers)
JULY/AUG/SEPT	65	77	46
OCT/NOV/DEC	53	74	34
JAN/FEB/MAR	53	0	0
APR/MAY/JUNE	55	0	0

**GOALS AND ACTUAL NEW CLUBS CUMULATIVE**



**GOALS AND ACTUAL MEMBERS CUMULATIVE**



**DROPPED CLUBS: 1**

**24 CLUBS OF 55 ADDED 1 OR MORE NEW MEMBERS**

**GENDER DISTRIBUTION**

MALE	784 (53.41%)
FEMALE	683 (46.53%)
NON BINARY	1 (0.07%)
PREFER NOT TO ANSWER	0 (0.00%)

**DROPPED MEMBERS**

[CLICK HERE FOR CUMULATIVE MEMBERSHIP DATA](#)

DECEASED	7
CLUB CANCELLED	0
OTHER	73
<b>TOTAL</b>	<b>80</b>

TOTAL FAMILY UNIT MEMBERS 279

FAMILY MEMBERS PAYING HALF DUES 148